



# School District of Milton



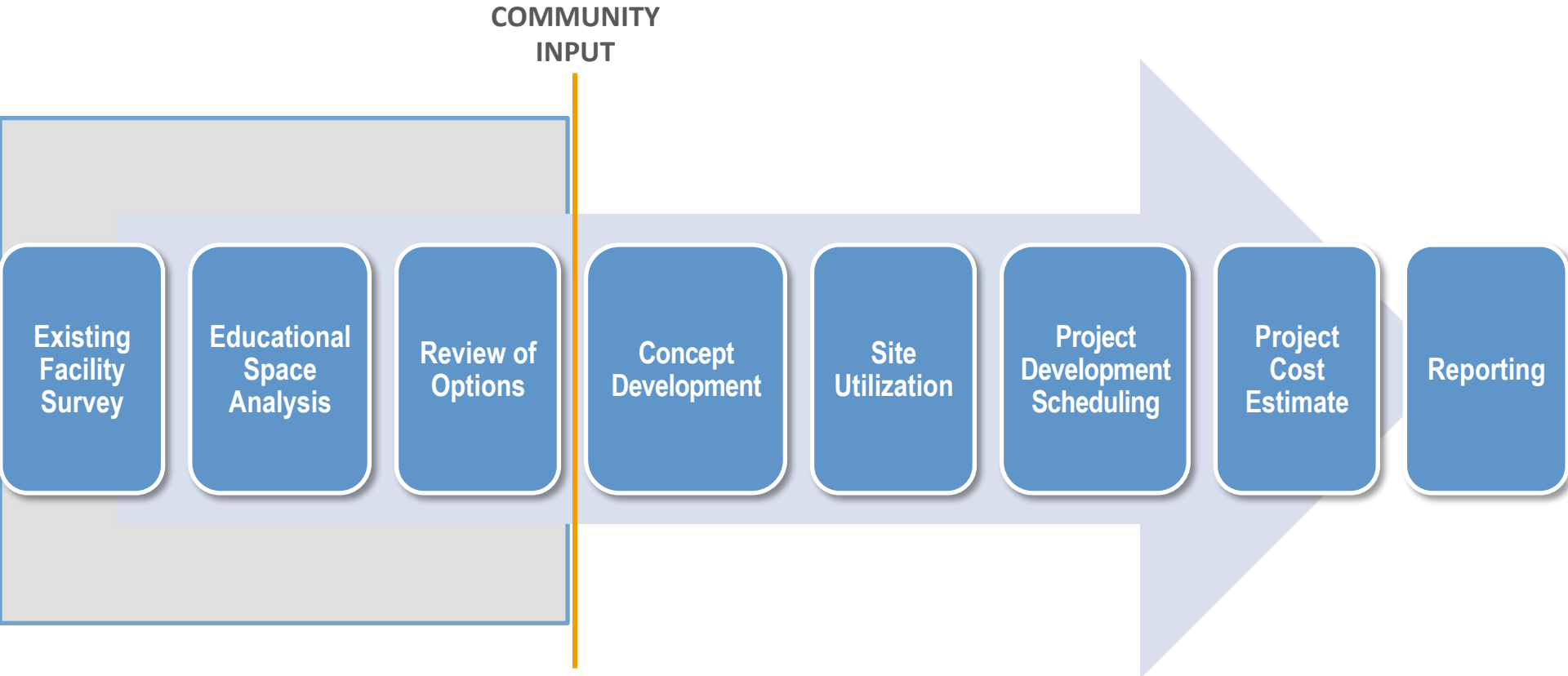
community engagement - 8 July 2015

overview

**master planning**

creativity | collaboration | dedication

# master planning process



step 1

**existing facilities**

creativity | collaboration | dedication

# existing facilities study

## Consolidated Elementary



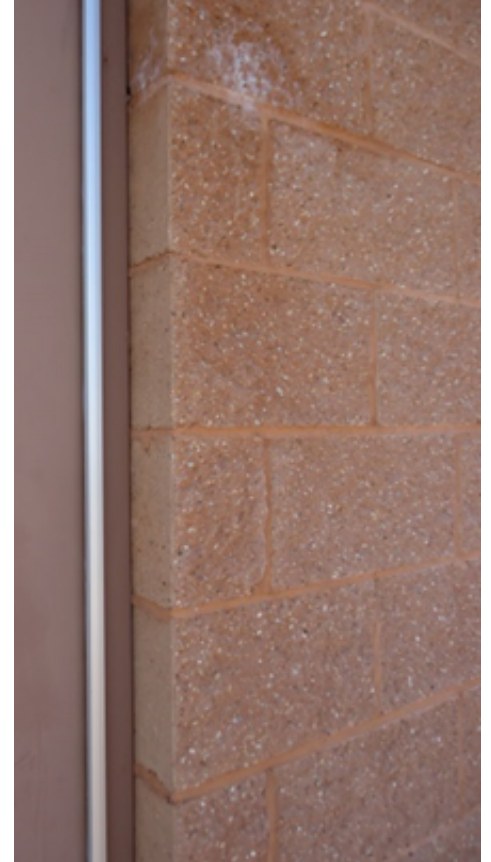
# existing facilities study

## Milton East Elementary



# existing facilities study

## Harmony Elementary



# existing facilities study

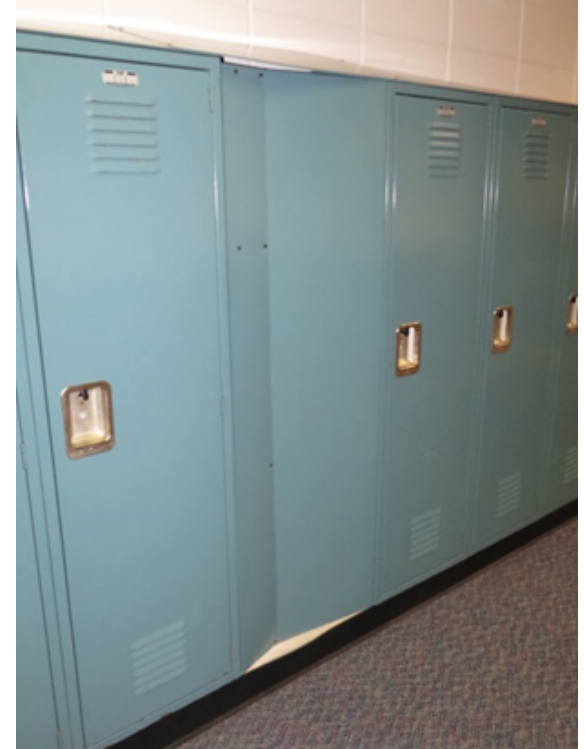
## Milton West Elementary





# existing facilities study

## Northside Intermediate



# existing facilities study

## Milton Middle School



# existing facilities study

## Milton High School



step 2

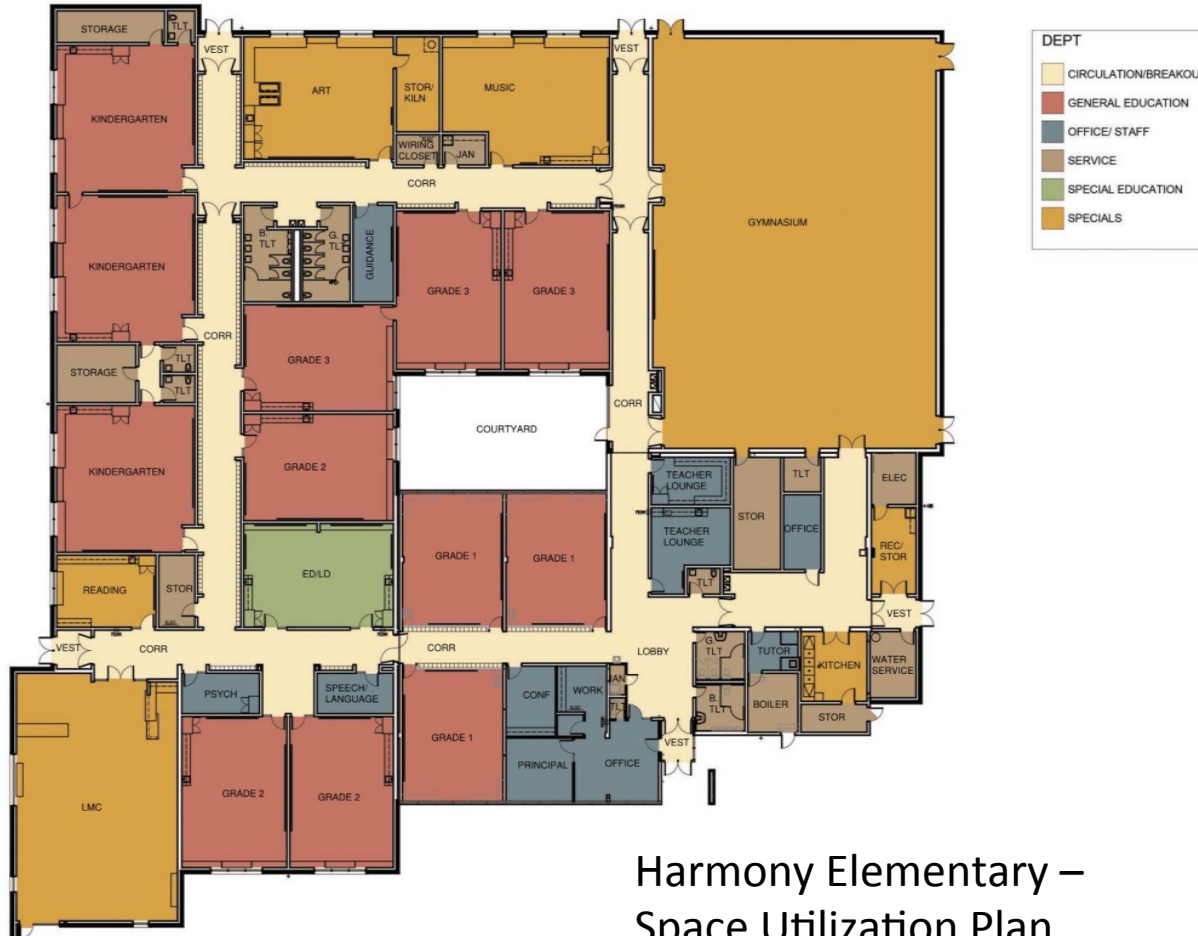
**educational space  
study**

creativity

| collaboration

| dedication

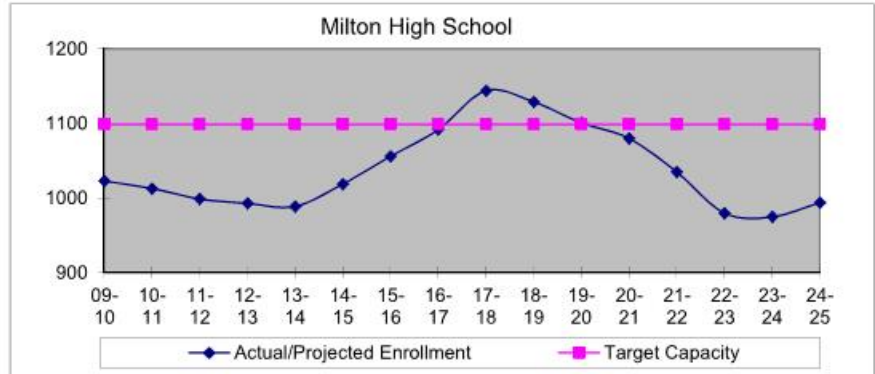
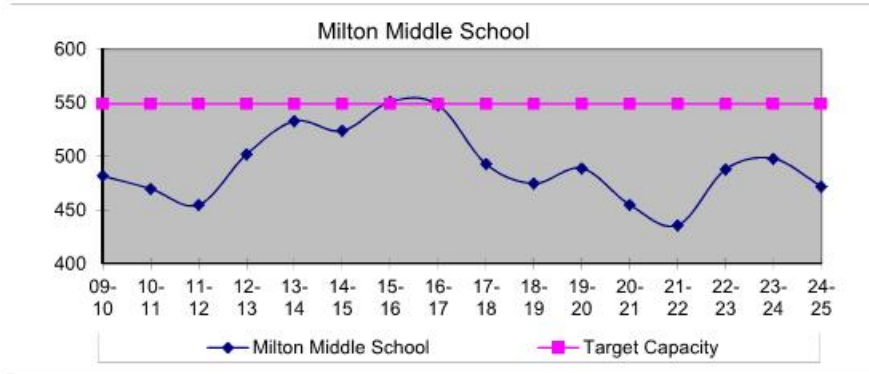
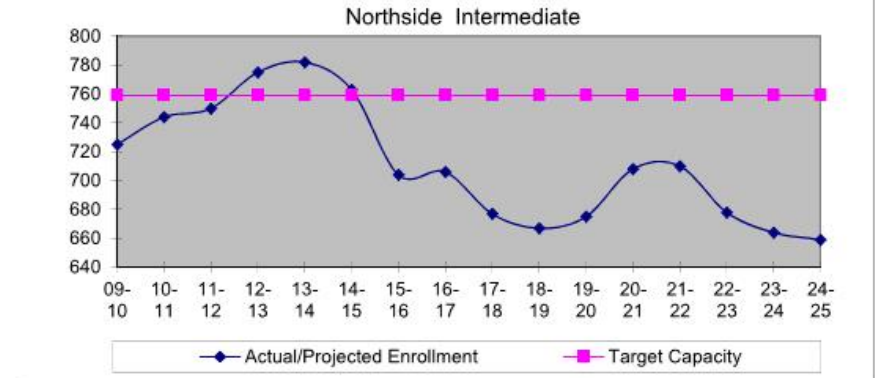
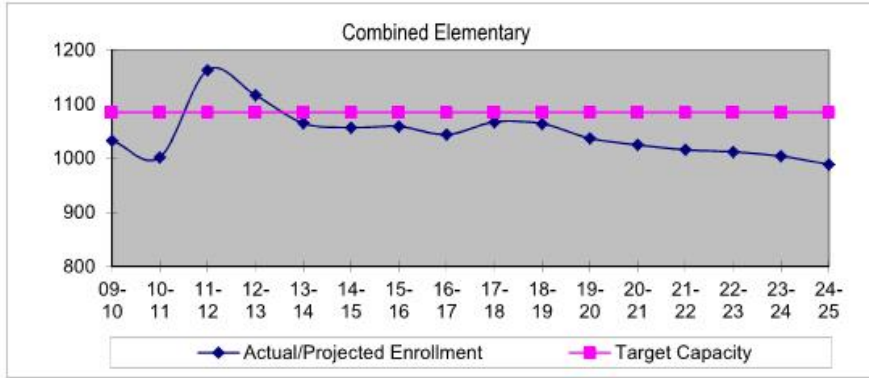
# educational space study



# educational space study

	Enrollment	Target Capacity
Consolidated Elementary	80	86
Harmony Elementary	248	257
Milton East Elementary	309	336
Milton West Elementary	266	282
Northside Intermediate	763	756
Milton Middle School	525	549
Milton High School	1,019	1,028

# educational space study



step 3

**options**

**development**

creativity

| collaboration

| dedication



# options development

## **Option 1 – Address Maintenance Needs**

- Address maintenance items at all buildings
- Address accessibility items at all buildings
- Pursue referendum to address all items as a coordinated effort

# options development

## **Option 2 – Renovate and Expand MS & HS**

### **Option 2A – Maintain Current Grade Level Configuration**

- Significantly renovate and expand the existing High School building to accommodate modern learning environments (Grades 9-12)
- Significantly renovate existing Middle School and expand the building to accommodate modern learning environments (Grades 7-8)
- Maintain current grade level configurations at all buildings
- Renovate and expand each elementary to accommodate modern learning (Grades K-3)
- Address maintenance items at all buildings

# options development

## **Option 2 – Renovate and Expand MS & HS**

### **Option 2B – Reconfigure Grade Levels**

- Significantly renovate and expand the existing High School building to accommodate modern learning environments (Grades 9-12)
- Significantly renovate existing Middle School and expand the building further to accommodate modern learning environments and Grade 6 (Grades 6-8)
- Shift Sixth Grade from Northside Intermediate to the expanded Middle School
- Shift Third Grade to Northside Intermediate (Grades 3-5) to free space at Elementary Schools
- Renovate space at Consolidated, East, West and Harmony Elementaries to provide Breakout/Student Collaboration spaces and accommodate Grades 4K-2
- Address maintenance items at all buildings

# options development

## **Option 3 – Build New Middle School**

### **Option 3A – Maintain Current Grade Level Configuration**

- Significantly renovate and expand the existing High School building to accommodate modern learning environments (Grades 9-12)
- Construct a smaller new Middle School building to maintain current grade level configurations adjacent to the existing High School building (Grade 7-8). Configure the building to allow some sharing of facilities between High School and Middle School.
- Maintain current grade level configurations at all buildings
- Renovate and expand space at Consolidated, East, West and Harmony Elementaries to provide Breakout/Student Collaboration spaces and accommodate Grades 4K-3
- Selective renovation at existing Middle School to accommodate MECAS and Community Programming
- Address maintenance items at all buildings

# options development

## **Option 3 – Build New Middle School**

### **Option 3B – Reconfigure Grade Levels, Close MS Building**

- Significantly renovate and expand the existing High School building to accommodate modern learning environments (Grades 9-12)
- Construct a larger new Middle School building adjacent to the existing High School building (Grade 6-8). Configure the building to allow some sharing of facilities between High School and Middle School.
- Shift Sixth Grade to the New Middle School building
- Shift Third Grade to Northside Intermediate (Grades 3-5) to free space at Elementary Schools
- Renovate space at Consolidated, East, West and Harmony Elementaries to provide Breakout/Student Collaboration spaces and accommodate Grades 4K-2.
- Close current Middle School building – reserve for future capacity needs
- Address maintenance items at all buildings except former Middle School Building

# options development

## **Option 4 – Build New High School**

### **Option 4A – Convert Middle School to Elementary**

- Build new High School (Grades 9 – 12) adjacent to existing High School
- Renovate existing High School to accommodate Middle School (Grades 6-8)
- Shift Sixth Grade from Northside Intermediate into Middle School
- Northside Intermediate to house Grades 4 & 5
- Renovate existing Middle School Building to become fifth elementary school (Grades K-3)
- Renovate each elementary to accommodate modern learning (Grades K-3)
- Address maintenance items at all buildings

# options development

## **Option 4 – Build New High School**

### **Option 4B – Realign Grade Levels at Five Elementaries**

- Build new High School (Grades 9 – 12) adjacent to existing High School
- Renovate existing High School to accommodate Middle School (Grades 6-8)
- Move Sixth Grade from Northside Intermediate into Middle School
- Renovate existing Middle School into an Elementary School (Grades K-5)
- Convert Northside Intermediate into an Elementary School (Grades K-5)
- Add two classrooms and Breakout/Student Collaboration space to Consolidated Elementary (Grades K-5)
- Renovate space at East, West and Harmony to provide Breakout/Student Collaboration space (Grades 4K-5)
- Address maintenance items at all buildings

# options development

## **Option 4 – Build New High School**

### **Option 4C – Realign Grade Levels at Five Elementaries**

- Build new High School (Grades 9 – 12) adjacent to existing High School
- Renovate existing High School to accommodate Middle School (Grades 5-8)
- Renovate space at Northside, East, West and Harmony Elementaries to provide Breakout/Student Collaboration spaces and accommodate Grades 4K-4.
- Add one classroom and Breakout/Student Collaboration space to Consolidated El. (Grades K-4)
- Selective renovation at existing Middle School to accommodate MECAS and Community Programming
- Address maintenance items at all buildings



# options development

## **Option 4 – Build New High School**

### **Option 4D – Two Intermediate Schools**

- Build new High School (Grades 9 – 12) adjacent to existing High School
- Renovate existing High School to accommodate Middle School (Grades 6-8)
- Renovate space at Consolidated, East, West and Harmony Elementaries to provide Breakout/Student Collaboration spaces and accommodate Grades 4K-2.
- Renovate existing Middle School to become an Intermediate School (Grades 3-5)
- Shift some population from Northside Intermediate to second Intermediate; renovate areas to provide Breakout/Student Collaboration spaces (Grades 3-5)
- Address maintenance items at all buildings

# options development

## **Option 4 – Build New High School**

## **Option 4E – Repurpose Existing Middle School Building**

- Build new High School (Grades 9 – 12) adjacent to existing High School
- Renovate existing High School to accommodate Middle School (Grades 6-8)
- Selective renovation at existing Middle School to accommodate MECAS and Community Programming
- Shift Third Grade to Northside Intermediate (Grades 3-5) to free space at Elementary Schools
- Renovate space at Consolidated, East, West and Harmony Elementaries to provide Breakout/Student Collaboration spaces and accommodate Grades 4K-2.
- Address maintenance items at all buildings

# options development

## **Option 4 – Build New High School**

### **Option 4F – Close Middle School Building**

- Build new High School (Grades 9 – 12) adjacent to existing High School
- Renovate existing High School to accommodate Middle School (Grades 6-8)
- Shift Third Grade to Northside Intermediate (Grades 3-5) to free space at Elementary Schools
- Renovate space at Consolidated, East, West and Harmony Elementaries to provide Breakout/Student Collaboration spaces and accommodate Grades 4K-2.
- Close current Middle School building – reserve for future capacity needs
- Address maintenance items at all buildings except former Middle School Building

questions and  
**answers**



creativity | collaboration | dedication